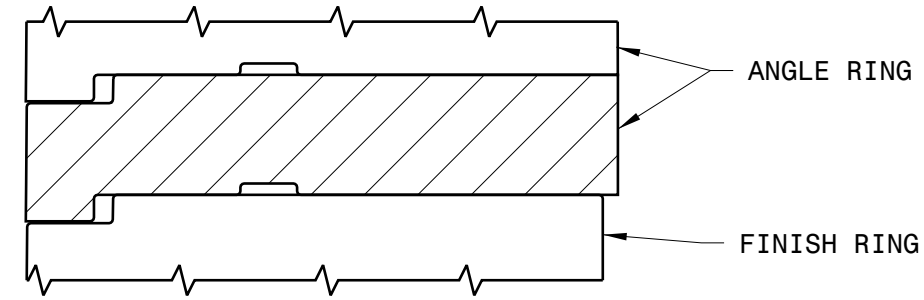


ANGLE RINGS					
PART NUMBER	OUTER DIA (IN.)	INNER DIA (IN.)	H1 (IN.)	H2 (IN.)	WEIGHT (lbs.)
35-25A-100	35	25	1.75	0.75	2.40

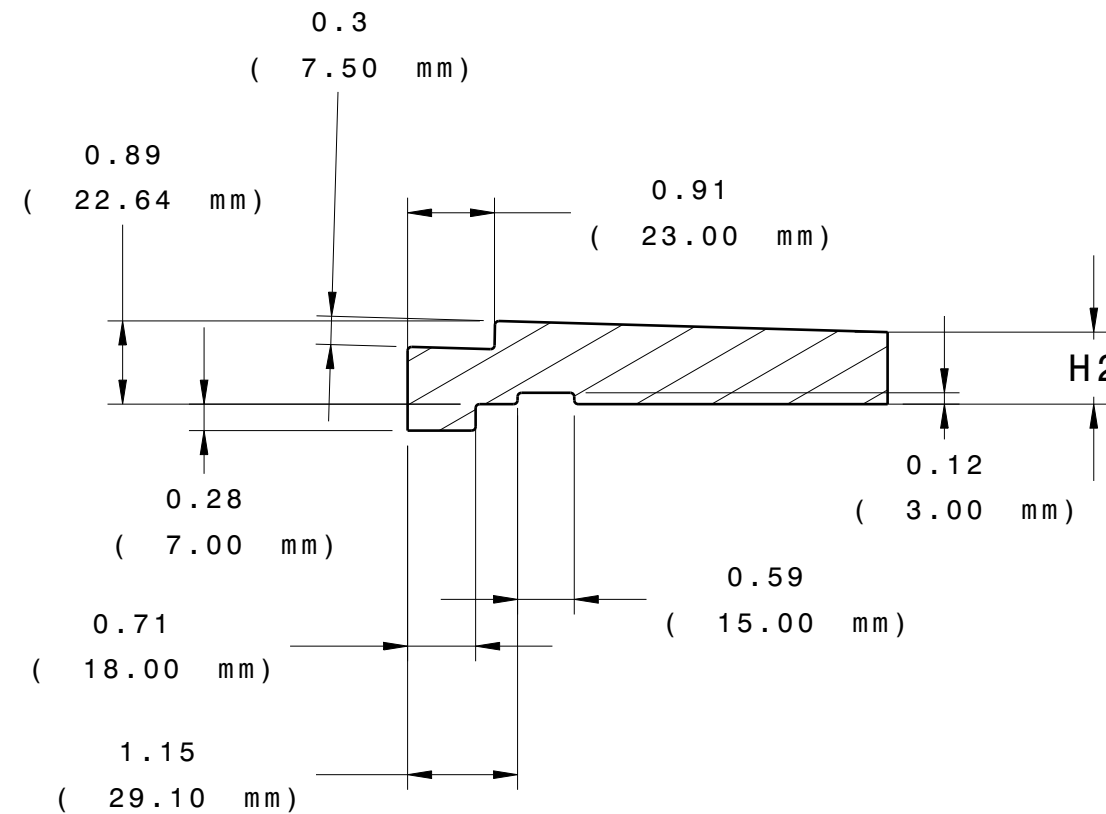
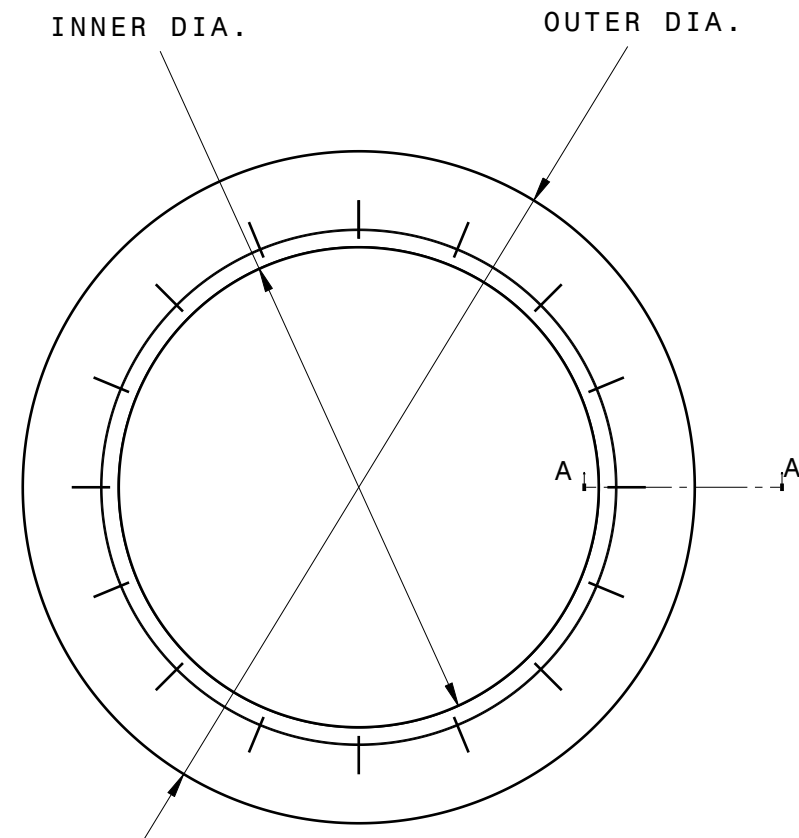
**PRO-RING™**

MANHOLE ADJUSTMENT SYSTEM

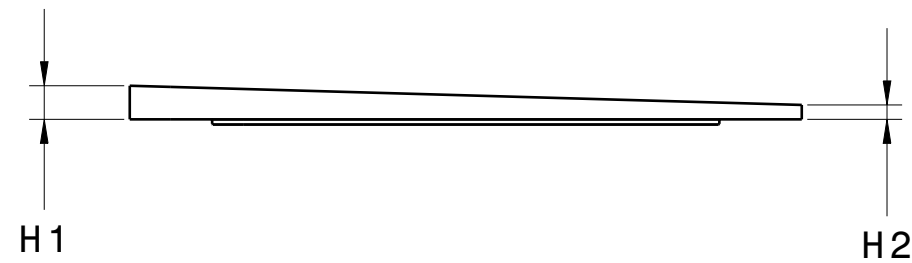
www.PRO-RING.com



Section  
Mating Components



Section cut A-A



## 35 SERIES ANGLE RING

LOAD RATING

**HEAVY DUTY**

MATERIAL SPECIFICATION

**ARPRO EXPANDED  
POLYPROPYLENE BLACK  
5000 SERIES  
ASTM-D3575**

LAST REVISED

ERN

DATE

20JUL2018