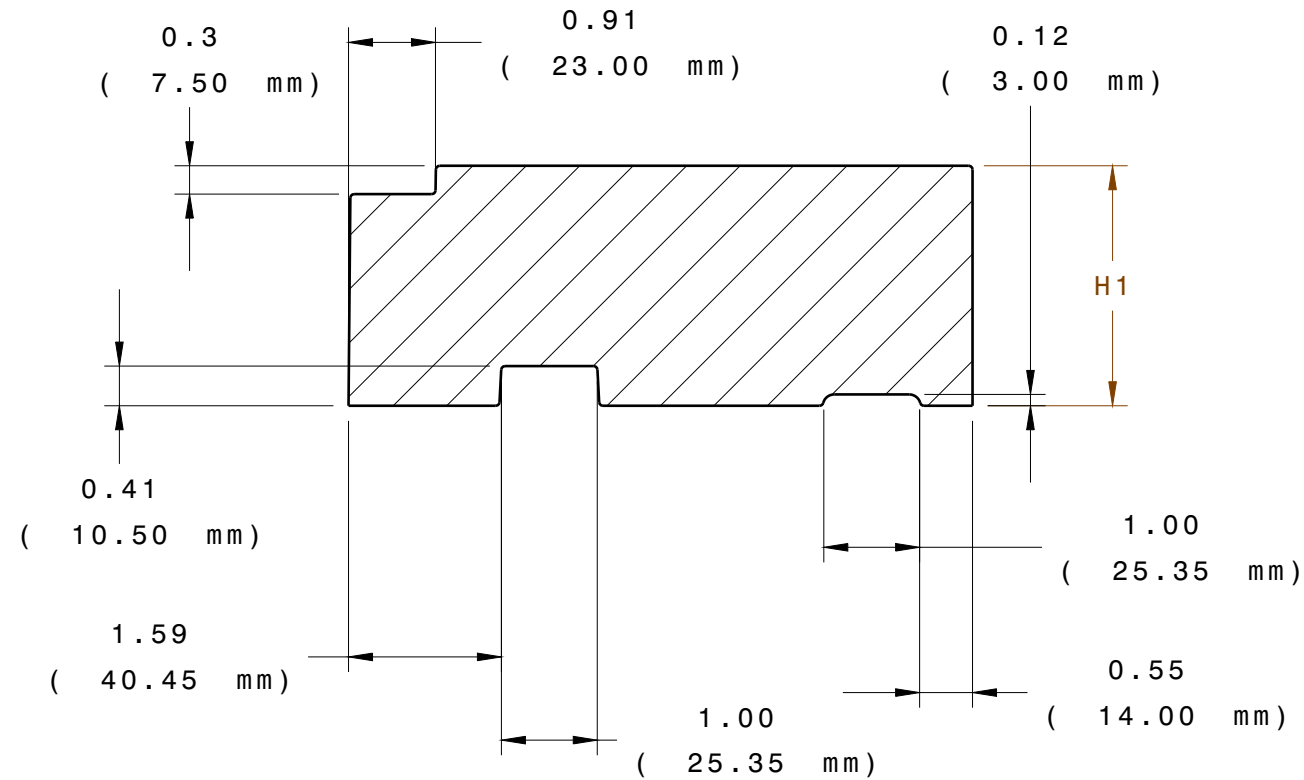
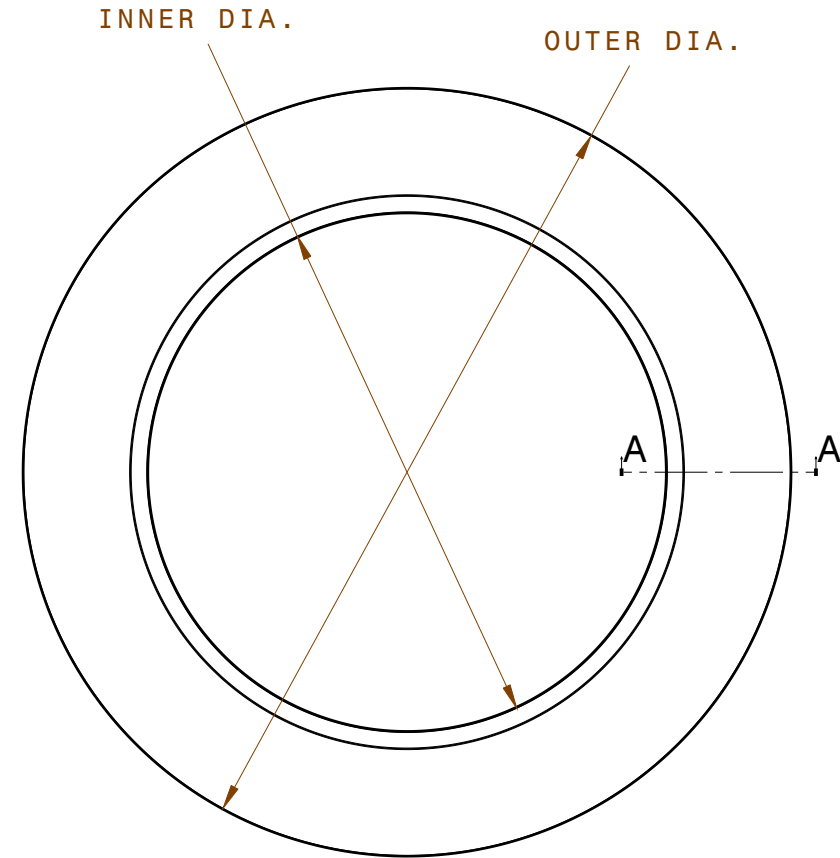
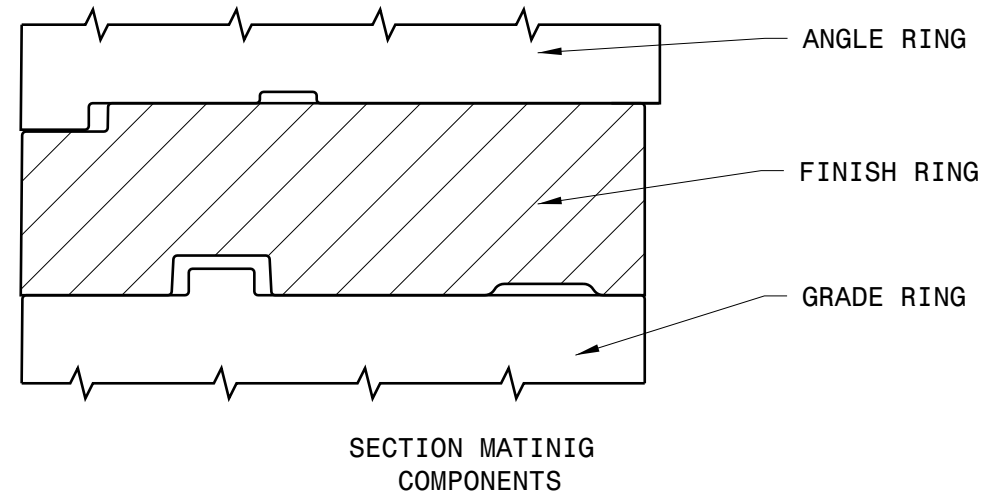


FINISH RING

PART NUMBER	OUTER DIA (IN.)	INNER DIA (IN.)	H1 (IN.)
40-27F-075	40	27	0.75
40-27F-100	40	27	1
40-27F-125	40	27	1.25
40-27F-150	40	27	1.50
40-27F-175	40	27	1.75
40-27F-200	40	27	2
40-27F-225	40	27	2.25
40-27F-250	40	27	2.50
40-27F-400	40	27	4
40-27F-600	40	27	6



Section cut A-A  
Scale: 1:2

GENERAL NOTES:

- MEETS HS20/HS25 LOADING PER M306 PROOF LOAD
- ARPRO EXPANDED POLYPROPYLENE BLACK 120 G/L ASTM-D3575
- OVERALL LENGTH & HEIGHT TOLERANCE = +/-0.25 %
- DENSITY/WEIGHT TOLERANCE = +/-10%

REV LEVEL	CHANGE DESCRIPTION	ECN #	DATE	INITIALS
03	ADDED 1.75", 2.25", AND 2.50" RINGS.	N/A	06JUL 2017	R.D.
02	ADDED 4" AND 6" RINGS.	N/A	09FEB 2017	R.D.
01	REMOVED OUTBOARD KEY SLOT. ADDED GLUE TRENCH.	N/A	05APR 2010	R.D.

<b>PRO-RING</b> MANHOLE ADJUSTMENT SYSTEM		PART NUMBER: 40 SERIES FINISH RINGS		CUSTOMER REVISION LEVEL:	
ENGINEER:		PHONE NUMBER:			
DRAWN BY:	ENGINEERING:	MOLDING:	QUALITY:		
MATERIAL: EPP		CAD SYSTEM: CATIA V5		Scale 1:10	
FILENAME:		SURFACE PROFILE: 5.0mm A B C		NO BURRS AT PARTING LINE PORTION	
		ALL HOLES OR SLOT SIZE TOLERANCE: ± 0.5 MM		MATERIAL SPECIFICATION: 3D CAD IS MASTER	

ANY HARD COPY OF THIS DRAWING IS TO BE CONSIDERED AN UNCONTROLLED COPY UNLESS OTHERWISE SPECIFIED. ELECTRONIC COPY IS MASTER.