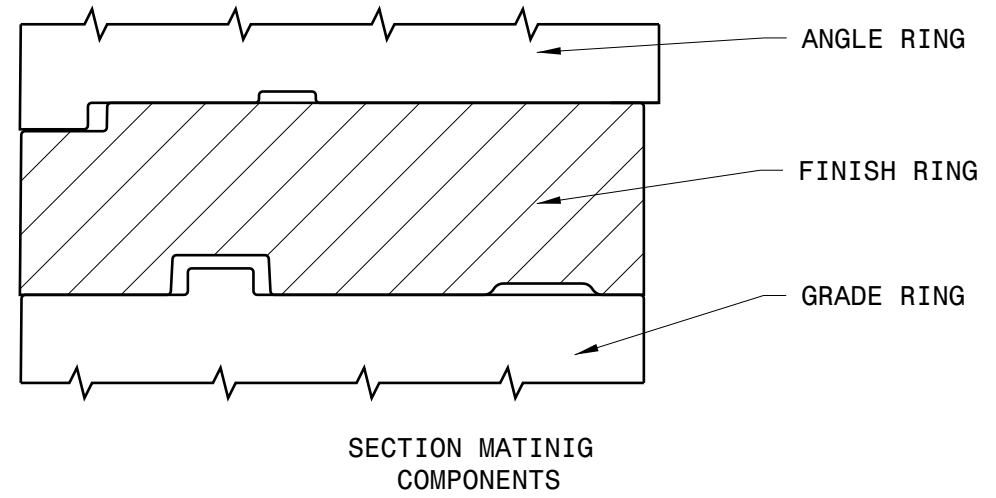
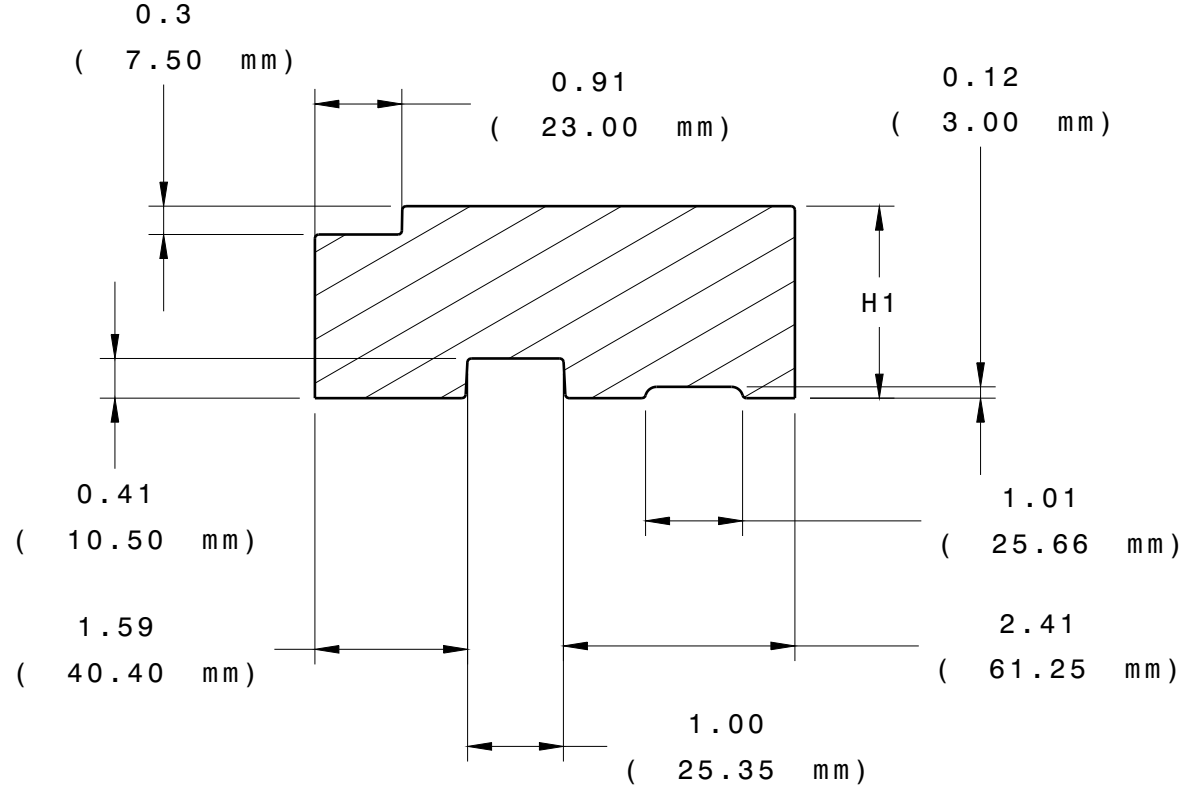
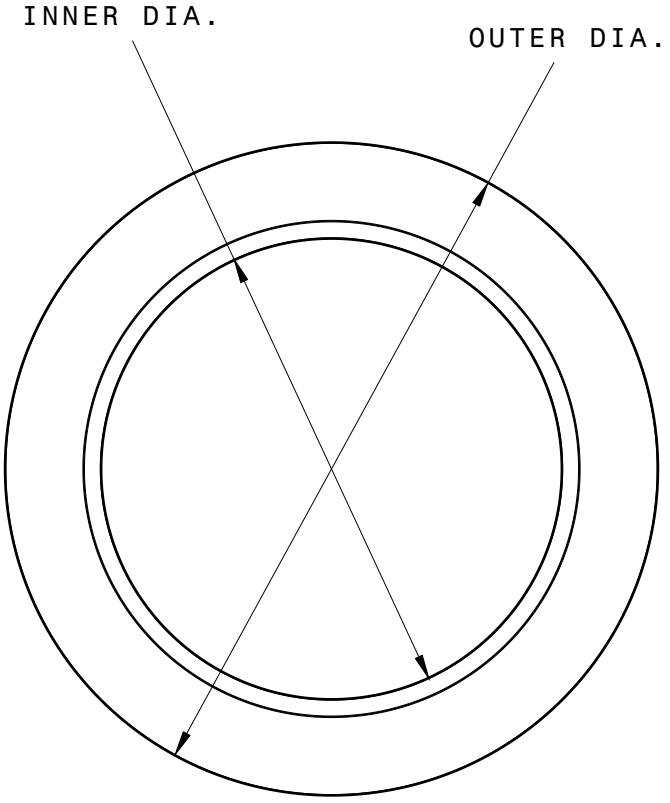


FINISH RING				
PART NUMBER	OUTER DIA (IN.)	INNER DIA (IN.)	H1 (IN.)	WEIGHT (lbs.)
34-24F-075	34	24	0.75	1.20
34-24F-100	34	24	1	1.65
34-24F-125	34	24	1.25	2.38
34-24F-150	34	24	1.5	2.63
34-24F-175	34	24	1.75	3.15
34-24F-200	34	24	2	3.68
34-24F-225	34	24	2.25	4.13
34-24F-250	34	24	2.5	4.65
34-24F-400	34	24	4	7.36
34-24F-600	34	24	6	9.9



SECTION MATINIG COMPONENTS



Section cut A-A

GENERAL NOTES:

- MEETS HS20/HS25 LOADING PER M306 PROOF LOAD
- ARPRO EXPANDED POLYPROPYLENE BLACK 120 G/L ASTM-D3575
- OVERALL LENGTH & HEIGHT TOLERANCE = +/-0.25 %
- DENSITY/WEIGHT TOLERANCE = +/-10%

REV LEVEL	CHANGE DESCRIPTION	ECN #	DATE	INITIALS
03	ADDED 4" AND 6" RINGS	N/A	09FEB 2017	K.B.
02	ADDED PART WEIGHTS	N/A	05DEC 2016	K.B.
01	INITIAL RELEASE	N/A	28JUL 2016	E.N.

<b>PRO-RING</b> MANHOLE ADJUSTMENT SYSTEM		PART NUMBER: 34 SERIES FINISH RINGS		CUSTOMER REVISION LEVEL:	
ENGINEER:		PHONE NUMBER:			
DRAWN BY:	ENGINEERING:	MOLDING:	QUALITY:		
MATERIAL: EPP		CAD SYSTEM: CATIA V5		Scale 1:10	
SURFACE PROFILE: 5.0mm A B C M		NO BURRS AT PARTING LINE PORTION		ALL HOLES OR SLOT SIZE TOLERANCE: ± 0.5 MM	
MATERIAL SPECIFICATION: 3D CAD IS MASTER		ANY HARD COPY OF THIS DRAWING IS TO BE CONSIDERED AN UNCONTROLLED COPY UNLESS OTHERWISE SPECIFIED. ELECTRONIC COPY IS MASTER.			